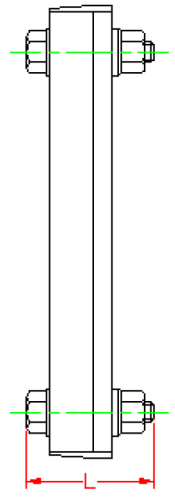
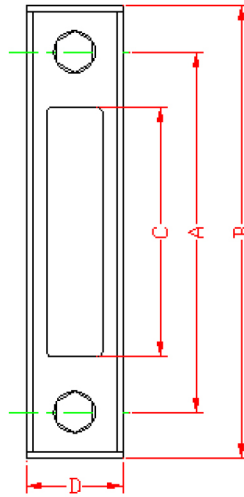
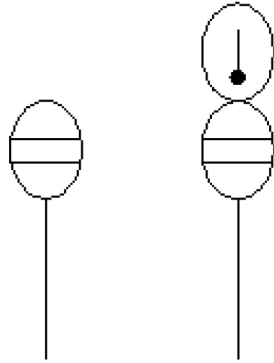


Oil Level Indicators With Thermometer



SYMBOL



HOW TO ORDER :

OLGT - 127

유면계	
OLG	온도계 없음
OLGT	온도계 부착

취부볼트 중심간 거리	
76	76mm
127	127mm
254	254mm

SPECIFICATION :

- Material
- Aluminium + Acrylic Resin
- 내열 온도 : 85°C
- 온도계 눈금 범위 : 0°C ~ 100°C
- 취부볼트의 체결토크 : 17 ~ 19 N·m

MODEL	A		B (mm)	C (mm)	D (mm)	L (mm)	Bolt	Weight (kg)
	(mm)	(inch)						
OLGT 76	76	3"	109	37	34	40	M10X1.5P	0.10
OLGT 127	127	5"	160	88	34	45	M12X1.75P	0.20
OLGT 254	254	10"	287	215	34	45	M12X1.75P	0.35

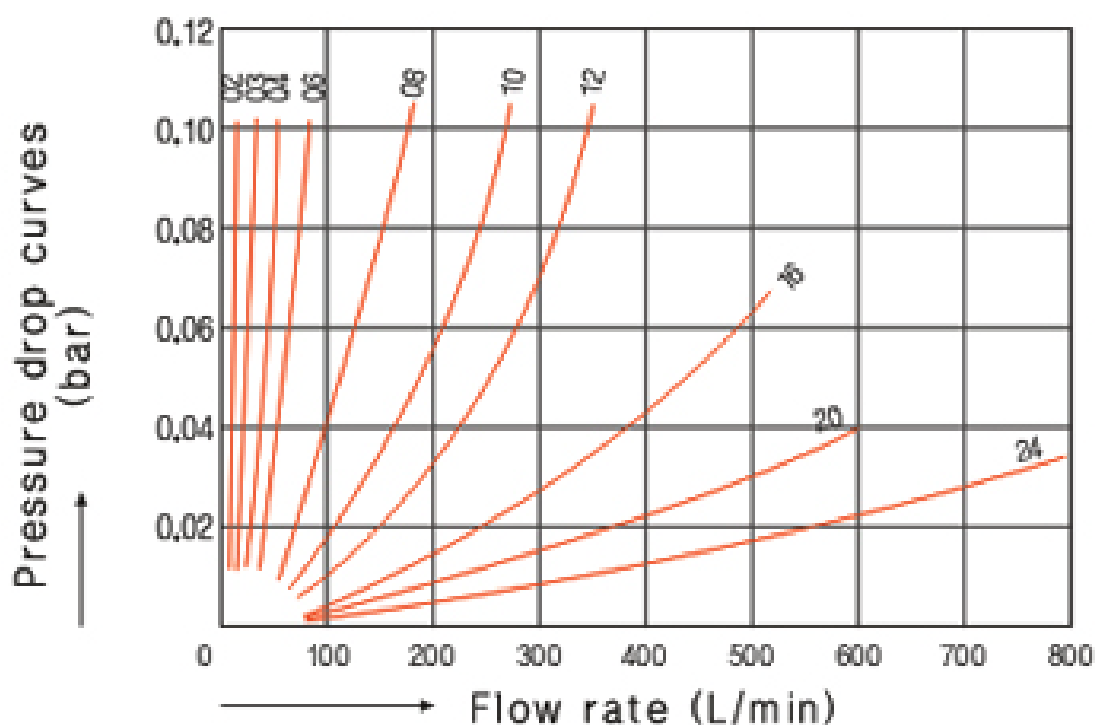
Specifications(특징)

- 일반 작동유용이며 탱크내장형입니다.
- 간단한 세척으로 재사용이 가능합니다.
- **100mesh**(Stainless steel mesh)가 **표준**입니다.
- Rugged steel inner support
- Aluminum head
- Suitable for all mineral and petroleum based fluids

Options

- **Aluminum Head**가 **표준**이며 30% Glass-Filled Nylon Head도 주문 가능합니다. (SH-SE-AL-00, SH-SE-PL-00)
- Available with integral **by-pass assembly**
- 하부 자석(Magnet) 부착 가능합니다.
- **All SUS로 제작도** 가능합니다.

SH-SE Filtration : 100 Mesh



Part Number	Thread G. BSP	A (mm)	øD (mm)	H (mm)	H1 (mm)	Flow rate (L/min)		
						100mesh	150mesh	200mesh
SH-SE-02	PT ¼"	26	55	95	10	24	20	17
SH-SE-03	PT ⅜"	26	55	95	10	24	20	17
SH-SE-04	PT ½"	30	65	150	16	65	55	42
SH-SE-06	PT ¾"	35	65	155	20	65	55	42
SH-SE-08	PT 1"	43	86	185	20	108	90	72
SH-SE-10	PT 1¼"	53	102	205	22	180	150	120
SH-SE-12	PT 1½"	61	123	225	24	246	205	150
SH-SE-16	PT 2"	71	123	308	27	384	320	230
SH-SE-20	PT 2½"	91	145	410	25	700	600	500
SH-SE-24	PT 3"	102	145	410	25	700	600	500
SH-SE-32	PT 4"	130	168	460	17	800	700	600
SH-SE-40	PT 5"	161	195	475	20	1000	900	800
SH-SE-48	PT 6"	180	220	505	20	1300	1200	1100
SH-SE-64	PT 8"	243	285	575	19	2200	2000	1800
SH-SE-80	PT 10"	301	355	625	22	3000	2700	2500

※ AL NUT 기준입니다. / 규격외의 제품은 주문제작합니다. (Non-standard products available to order)